



# GAT MONTHLY MEMBERSHIP PROGRESS REPORT

Results as of: 6/30/2023

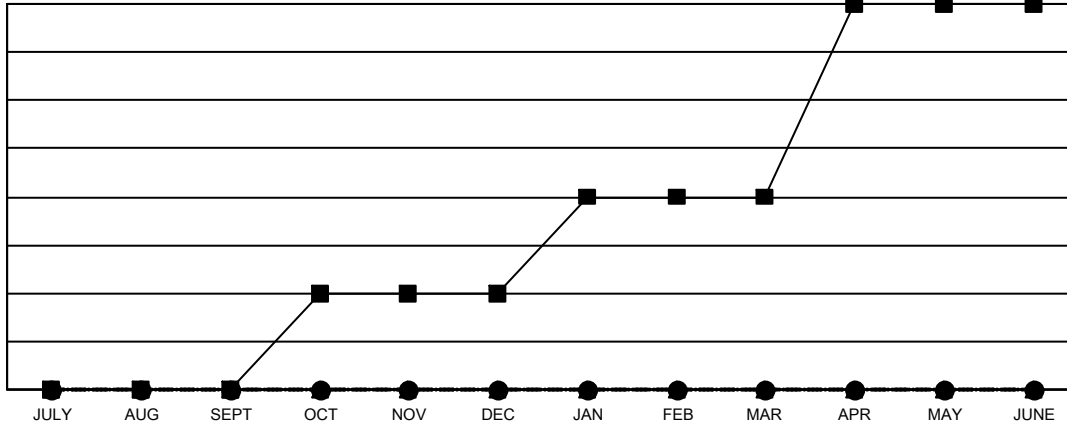
Multiple District 43

LOCATION: KENTUCKY

Clubs			
RESULTS FOR 2022-2023			
QUARTER	NEW CLUB GOAL	NEW CLUBS	DROPPED CLUBS
JULY/AUG/SEPT	0	0	3
OCT/NOV/DEC	1	0	1
JAN/FEB/MAR	1	0	0
APR/MAY/JUNE	2	0	2

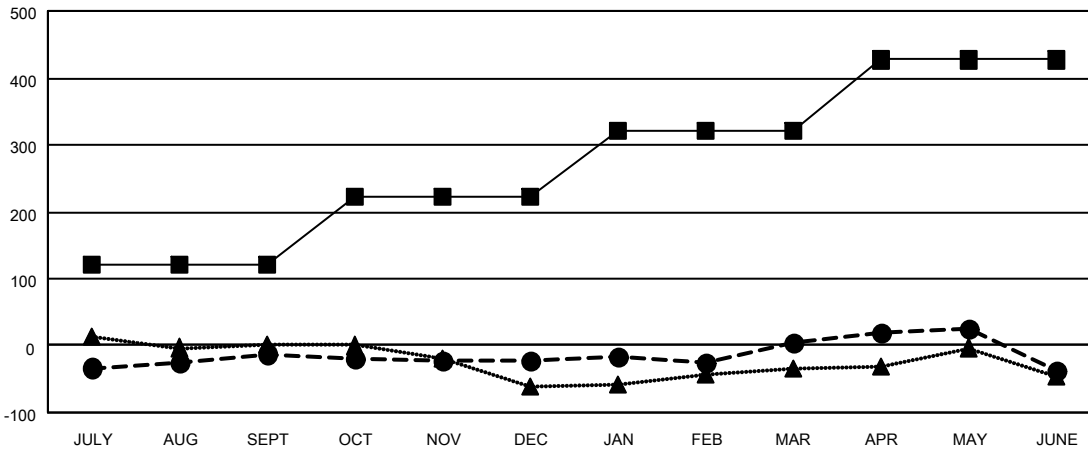
Members			
RESULTS FOR 2022-2023			
QUARTER	MEMBER GROWTH NET GOAL	MEMBER GROWTH ACTUAL	DROPPED MEMBERS ACTUAL (including transfers)
JULY/AUG/SEPT	122	116	109
OCT/NOV/DEC	100	73	74
JAN/FEB/MAR	100	109	77
APR/MAY/JUNE	105	126	161

GOALS AND ACTUAL NEW CLUBS CUMULATIVE



- CURRENT YEAR GOALS FOR NEW CLUBS
- CURRENT YEAR ACTUAL NEW CLUBS
- ▲- LAST YEAR ACTUAL NEW CLUBS

GOALS AND ACTUAL MEMBERS CUMULATIVE



- MEMBER GROWTH NET GOAL
- MEMBER GROWTH ACTUAL
- ▲- LAST YEAR MEMBERSHIP ACTUAL

DROPPED CLUBS: 6	
<b>DROPPED MEMBERS</b>	
DECEASED	64
CLUB CANCELLED	31
OTHER	325
<b>TOTAL</b>	<b>420</b>

88 CLUBS OF 150 ADDED 1 OR MORE NEW MEMBERS

[CLICK HERE FOR CUMULATIVE MEMBERSHIP DATA](#)

GENDER DISTRIBUTION	
MALE	2,359 (64.40%)
FEMALE	1,298 (35.44%)
NON BINARY	0 (0.00%)
PREFER NOT TO ANSWER	6 (0.16%)
TOTAL FAMILY UNIT MEMBERS	751
FAMILY MEMBERS PAYING HALF DUES	388